

Sartoflow Alpha Benchtop Crossflow System



Description

The Family of Sartoflow Benchtop Crossflow Systems feature the latest advances in crossflow technology from Sartorius. The Sartoflow Alpha is a Crossflow filtration system for small scale Micro and Ultrafiltration in pharmaceutical and biotech applications.

It is mainly used in Process Development laboratories and Pilot Plants to run Scale-Up and Scale-Down trials as well as small clinical, pilot and production lots. The system is designed to accommodate up to 5 (0.1m²) Sartorius Sartocon Slice Cassettes. The design and engineering of the Slice Benchtop system is equivalent to a large scale production system.

Sartoflow Beta features digital display and acquisition of the process' pressures, and flow rates. Data acquisition is via a CFR21 part 11 compliant data recorder.

Sartocon filter cassettes utilize a parallel leaf design which provides the user with linear scale-up and predictable performance for future production needs. Therefore, the flow characteristics of a 5 square foot system are the same as the flow characteristics of a 500 square foot system.

Sartorius offers standard systems like the Sartoflow Alpha Benchtop as well as custom designs for laboratory, pilot plant and manufacturing.

Sartoflow Alpha System Advantages

- Compact foot print means you can locate the system almost anywhere
- Low operating volumes let you reach your concentration target
- Sanitary design makes this system ideal for cGMP production
- Low point drain facilitates recovery all of your product
- CFR 21 Part 11 Data Recorder means that you can securely log your data
- Every unit is designed for easy cleaning
- Pressure and flow transmitters mean that you can monitor the process
- Optional tank sizes means that you can accommodate your process scale needs

Documentation provided:

The system is supplied complete with a cGMP turn over package.

Specifications

Pump Output	>500 L/Hr @ 60 psi
Filter Area	1 to 5 ft ²
Tank Volume	2 or 10L
Min. Operating Volume	<200mL
Max. Inlet Pressure	60 psi
Piping Connections	Tri-clamp
Electrical Req	110 VAC/15 Amps
Dimensions	2' X 1.5' X 2' (LxWxH)

Components

316L SS Sartocon Slice Holder

316L SS Feed Tank (optional)

316L SS Rotary Lobe Pump

316L SS Magnetic Flow Meters

316L SS Sanitary Pressure Transmitters

316L SS Fractional Diaphragm Valves

316L CFR 21 Compliant Data Recorder

Sartorius Crossflow Filter

Quality and Documentation

Sartorius Crossflow filtration systems are manufactured from high quality components and designed to meet the strict requirements of cGMP operating environments. All wetted surfaces are 316 L SS electropolished with a surface finish < 20µ inch Ra.

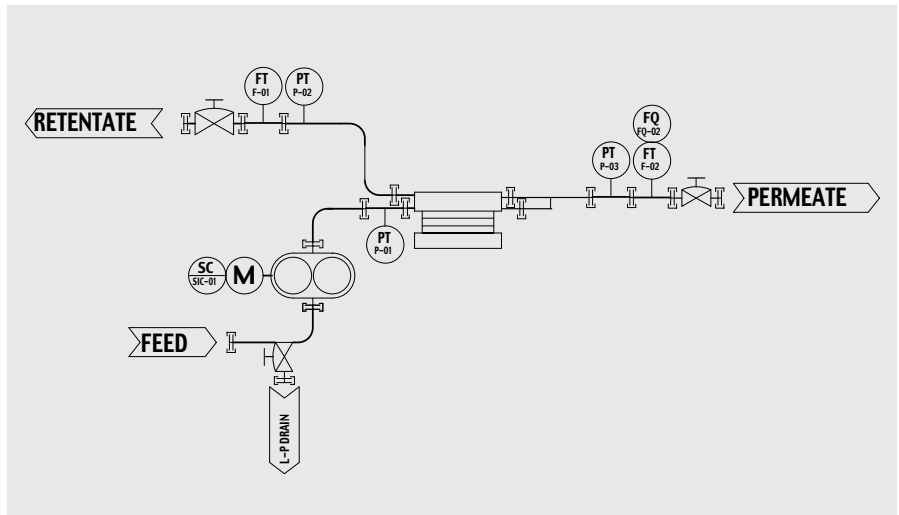
Standards and Codes

All fluid pathway components and manufacturing methods meet or exceed the current 3A Sanitary Standards "Accepted Practices for Permanently Installed Sanitary Products - Pipelines and Cleaning Systems".

All electrical enclosures are NEMA 4 and all electrical components are UL and CSA listed.

Ordering Information

Sartoflow Alpha
2L, Jacketed tank with interconnecting piping
10L, Jacketed tank with interconnecting piping



179SFG-07
179SFZT01
179SFZT02

Sartorius AG
Weender Landstrasse 94-108
37075 Goettingen, Germany

Phone +49.551.308.0
Fax +49.551.308.3289
www.sartorius.com

USA +1.631.2544274
UK +44.1372.737100
France +33.1.69192100
Italy +39.055.634041
Spain +34.91.3586100
Japan +81.3.33293366

Specifications subject to change
without notice.
Printed and copyrighted
by Sartorius · W/sart-000 · G
Publication No.: S--2036-am04051
Order No.: 85030-520-32